

ASSEMBLY MANUAL

DOG KENNEL COCKER Model



Dear Customer,

Thank you for purchasing a **FERRANTI** product.



OBLIGATION

Please consult this assembly manual carefully before proceeding with any operation on the product.

INTRODUCTION

This assembly manual reflects the technique at the time of purchase and the specifications in force at the current date of edition; it contains the information necessary for correct installation, cleaning and disposal of the product at the end of its life.

FERRANTI S.R.L. reserves the right to make modifications, changes or improvements to the manual or to the product at any time and without notice.

Use only the original mounting components provided.



ATTENTION

The manufacturer is not liable for damage to property, persons and animals caused by accidents due to failure to comply with the instructions in this assembly manual.

The images are purely indicative and do not constitute a commitment for the manufacturer and/or the Distributor.

Any proposal by the Customer regarding improvements to be made to the product will be welcomed by **FERRANTI S.R.L.**, which will evaluate their implementation.

INTENDED USE (PERMITTED USE).

The product in question has been designed for the **housing and keeping of animals**.

The inner dog house is suitable for 20-45 kg / 50-70 cm **large dog breeds**, (such as: female Shepherd, female Dobermann, English Setter) and for 18-40 kg / 50-63 cm **medium dog breeds**, (such as: Golden retriever, Boxer, Collie, Labrador, Border Collie).

IMPROPER USE (NOT PERMITTED).

Any use other than the permitted one is to be considered **"improper use"**; the Manufacturer therefore declines all responsibility for any damage caused to property, animals and/or persons.

GENERAL DESCRIPTION

The dog kennel, mod. Cocker consists of:

- structure in hot galvanized steel mesh, mesh 5x3 cm, wire 0.29 mm, buffered with panels in marine plywood treated with impregnating agent, 1.5 cm thick; gates dimensions 53(L)x105(H) cm;
- Inner wooden dog house (from 120x65- 82x59, with "anti-bite" entrance from 30x50, that can be inspected by lifting the roof and complete with bench raised from the ground, removable and washable;
- front in hot-dip galvanized mesh, complete with gate with hook

- and loop;
- sleeping area cover in insulated panel, 3.5 cm thick, framed with sheet metal profiles; living area with openable mesh roof for easy entry and cleaning;
The cover has a protrusion of about 6 cm in the sides, while it protrudes of about 10-11 cm in the back.
 - Also suitable for cats.

OVERALL DIMENSIONS

	125 x 240
External (WxDxH)	125 x 240 x 125 cm
Interior (WxDxH)	120 x 235 x 120 cm

W = Width / D = Depth / H = Height

UNPACKING

- Place the structure near the final installation site and on a stable and horizontal area of the ground.
- Remove the packaging materials taking care not to damage the components.



ATTENTION

DANGER! Keep out of the reach of children and animals.
Packaging materials (plastic bags, straps, etc.) can be a source of danger to health (e.g. suffocation).

- Divide the packaging materials according to their type and dispose of them in accordance with the provisions in force regarding the disposal of waste.



RECYCLING

All the packaging materials are recyclable and must be disposed of in accordance with the local legislation.

STANDARD EQUIPMENT

1	2	3	4	5	1	No. 8 screws M8x30
					2	No. 6 screws M8x50
					3	No. 6 screws 4.8x16
					4	No. 2 self-tapping screws 4.8x16
					5	No. 16 M8 nuts
6					6	No. 2 springs

INSTALLATION



The assembly operations must be performed by at least two persons.



For the assembly of the products, the use of Personal Protective Equipment is always recommended: work gloves to protect the hands from the danger of being cut.

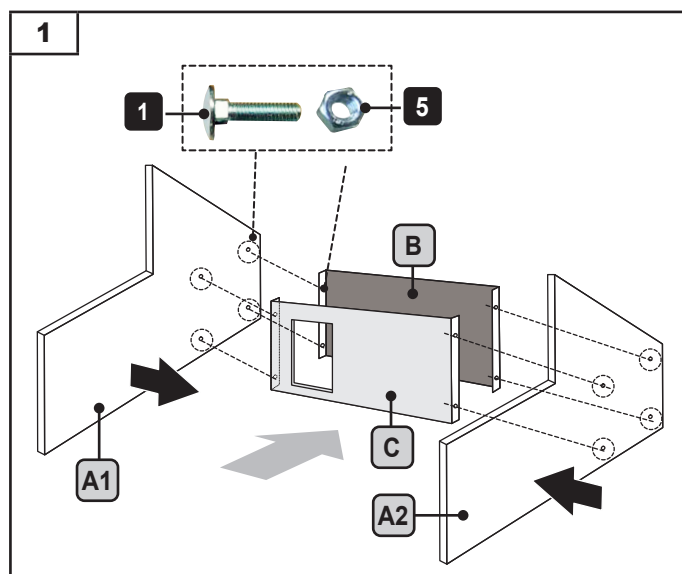
RECOMMENDED TOOLS

Slotted Screwdriver - Cross Head Screwdriver - Wrench - Cutter.

Note: Tighten the screws completely only at the end and after checking the square of the structure.

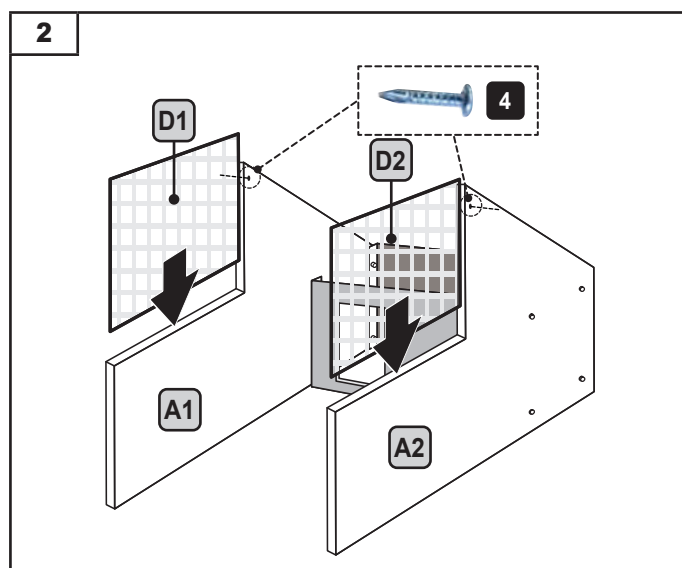
1) Assembling the sides (A1 and A2)

- Remove the **screws (1)** and **nuts (5)** from the kit supplied.
- Connect the **side wall (A1)** to the **rear wall (B)** and the **front wall (C)** using the screws and nuts.
- Proceed in the same way for the **side (A2)**.



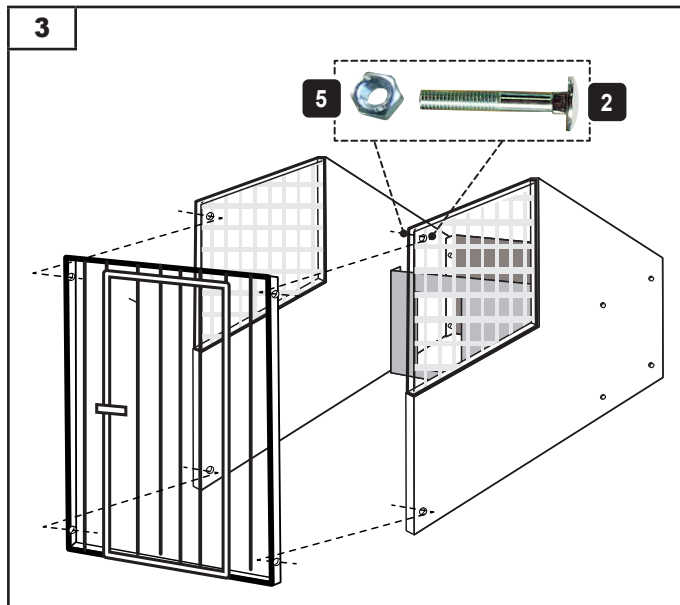
2) Assembling the mesh panels (D1 and D2)

- Remove the **screws (4)** from the kit supplied.
- Recess the **mesh panel (D1)** on the **side (A1)** and fix it with the screw in the point shown in the figure.
- Do the same for the **mesh panel (D2)**.



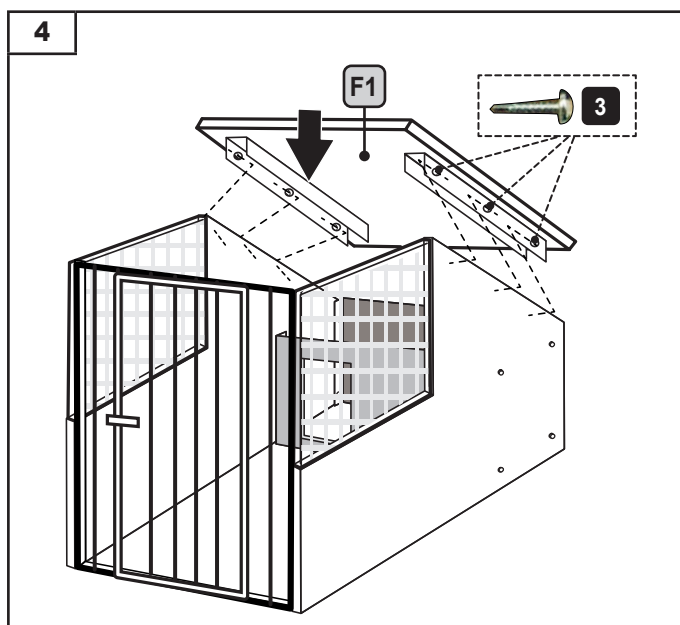
3) Assembling the gate (E)

- Remove the **screws (2)** and **nuts (5)** from the kit supplied.
- Secure the gate to the structure using the holes provided.



4) Assembling the dog house roof (F1)

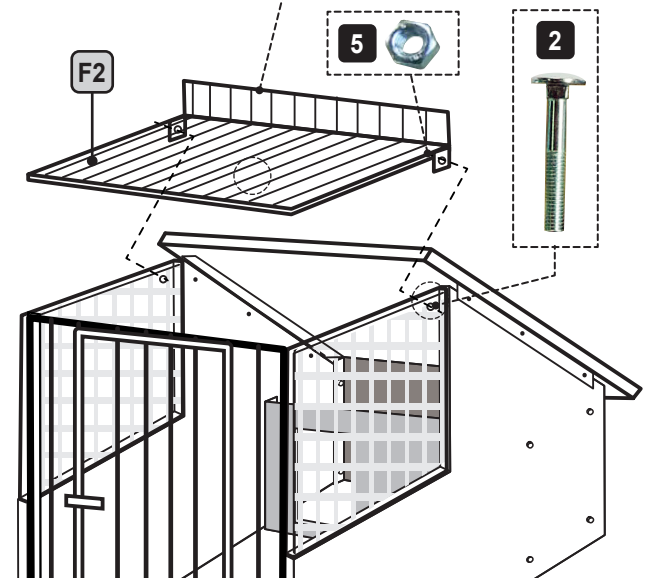
- Remove the **screws (3)** from the kit supplied.
- Fix the **roof (F1)** to the side panels at the indicated points.



5) Assembling the mesh roof (F2)

- Remove the **screws (2)** and **nuts (5)** from the kit supplied.
- Assemble the **mesh roof (F2)**, inserting the screws so as to allow it to open.

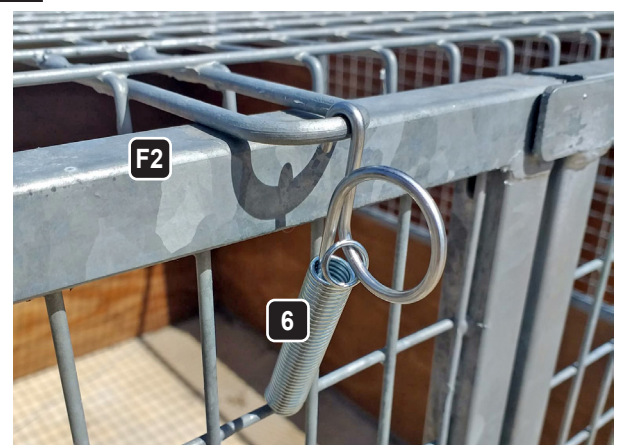
5



6) Assembling the springs

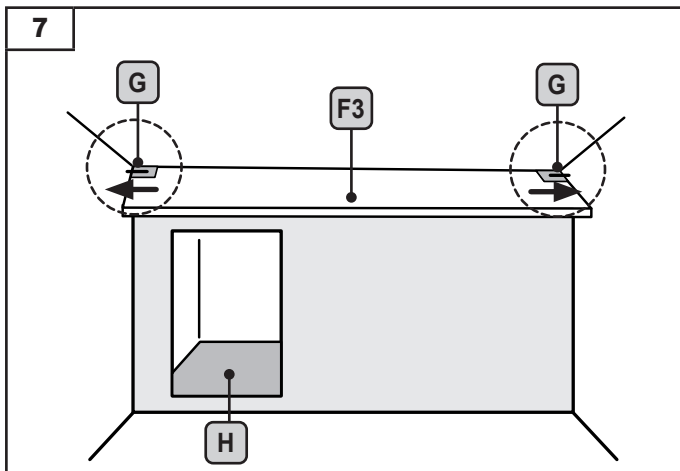
- Remove the **springs (6)** from the kit supplied.
- Insert the hook of the **springs (6)** to the connection provided on the **roof (F2)**.
- Hook the other end of the spring to the gate net.

6



7) Assembling the inner roof (F3) and the bench

- Enter the inside of the box and install the **internal roof (F3)** by securing it to the structure with the appropriate **hooks (G)**.
- Insert the **wooden bench (H)**.

**8) Finishes**

- Remove the transparent protective plastic from the insulated panels (use a cutter).
- It is advisable to apply silicone to the roof joints.

CLEANING



Clean the structure periodically (or in the presence of obvious dirt). Sanitise, disinfect and clean the inside of the kennel with suitable products that are not harmful to the health of the person and the animal.

SCRAPPING AND DISPOSAL



The materials that compose the structure must be disposed of according to the type and procedures provided for by the legislation in force in the country of installation.

For further detailed information on the disposal of this product, contact the municipal office, the local waste disposal service or the store where it was purchased.