

ASSEMBLY MANUAL

DOG KENNEL ECO Model



COLLIE doghouse



DOBERMANN doghouse

FERRANTI
cucce e box per animali

Dear Customer,

Thank you for purchasing a **FERRANTI** product.



OBLIGATION

Please consult this assembly manual carefully before proceeding with any operation on the product.

INTRODUCTION

This assembly manual reflects the technique at the time of purchase and the specifications in force at the current date of edition; it contains the information necessary for correct installation, cleaning and disposal of the product at the end of its life.

FERRANTI S.R.L. reserves the right to make modifications, changes or improvements to the manual or to the product at any time and without notice.

Use only the original mounting components provided.



ATTENTION

The manufacturer is not liable for damage to property, persons and animals caused by accidents due to failure to comply with the instructions in this assembly manual.

The images are purely indicative and do not constitute a commitment for the manufacturer and/or the Distributor.

Any proposal by the Customer regarding improvements to be made to the product will be welcomed by **FERRANTI S.R.L.**, which will evaluate their implementation.

INTENDED USE (PERMITTED USE).

The product in question has been designed for the **housing and keeping of animals**.

IMPROPER USE (NOT PERMITTED).

Any use other than the permitted one is to be considered “**improper use**”; the Manufacturer therefore declines all responsibility for any damage caused to property, animals and/or persons.

GENERAL DESCRIPTION

The **Eco dog kennel model**, is available in two versions, the Collie model and the Dobermann model.

► Collie dog house Mod. (sleeping area).

Suitable for **medium sized dogs** (18-40 kg, 50-63 cm):

Golden retriever, Boxer, Collie, Labrador, Border collie.

Made of marine plywood treated with impregnating agent, 1.5 cm thick, easily disinfected and washable; complete with insulated opening roof and wooden platform raised above the ground by 7 cm, removable and washable.

► **Dobermann doghouse Model (sleeping area)**

Suitable for large size dogs (20-45 kg, 50-70 cm):

German Shepherd, Dalmatian, Female Dobermann, English Setter, Akita Inu, Argentine Dogo, Czechoslovak Wolf.

Made with insulating panels, 3.5 cm thick, framed with sheet metal profiles, easily disinfected and washable; the bed includes an openable roof and wooden platform raised above the ground by 7 cm, removable and washable.

► **Living area enclosure (open area)**

Made with mesh panels, mesh 5x5 cm wire 0.39 cm hot-dip galvanized; including gate with lock holder bolt (can be expanded by adding additional panels).

Coverage of living area with insulating panel (on request).

On request: side panels in the living area closed at the bottom in insulated, to prevent the dogs from seeing each other.

OVERALL DIMENSIONS

MOD. DOBERMANN		
Total overall dimensions (WxDxH)	cm	125 x 290 x 170
Bed (WxDxH)	cm	119 x 101 x 98
Enclosure (WxDxH)	cm	125 x 200 x 170

MOD. COLLIE		
Total overall dimensions (WxDxH)	cm	125 x 270 x 170
Bed (WxDxH)	cm	119 x 86 x 97
Enclosure (WxDxH)	cm	125 x 200 x 170

W = Width / D = Depth / H = Height

UNPACKING

- Place the structure near the final installation site and on a stable and horizontal area of the ground.
- Remove the packaging materials taking care not to damage the components.



DANGER! Keep out of the reach of children and animals.
Packaging materials (plastic bags, straps, etc.) can be a source of danger to health (e.g. suffocation).

- Divide the packaging materials according to their type and dispose of them in accordance with the provisions in force regarding the disposal of waste.



All the packaging materials are recyclable and must be disposed of in accordance with the local legislation.

STANDARD EQUIPMENT - COLLIE MODEL



1	Screws M8x40	No. 4
2	Screws M8x60	No. 6
3	Self-tapping screws	No. 2
4	Self-tapping screws with hexagonal head	No. 4
5	Expanded gaskets/rhomboid washers	No. 4+4
6	Screws M8x30	No. 8
7	4.8x16 screws	No. 8
8	Nuts M8	No. 18 approx.

STANDARD EQUIPMENT - DOBERMANN MODEL



1	Screws M8x40	No. 6
2	Screws M8x60	No. 4
3	Self-tapping screws	No. 2
4	Self-tapping screws with hexagonal head	No. 4
5	Expanded gaskets/rhomboid washers	No. 4+4
6	Screws M8x45	No. 8
7	Screws M5x15	No. 2
8	Nuts M8	No. 18 approx.

INSTALLATION



The assembly operations must be performed by at least two persons.



For the assembly of the products, the use of Personal Protective Equipment is always recommended: work gloves to protect the hands from the danger of being cut.

RECOMMENDED TOOLS

Slotted Screwdriver - Cross Head Screwdriver - Wrench - Cutter.

Note: Tighten the screws completely only at the end and after checking the square of the structure.

PHASE 1: BED ASSEMBLY

- A** Rear wall
- B** Side wall
- C** Front wall
- D** Roof
- E** Bracket
- F** Holes prepared for roof assembly
- G** Platform

1A Assembly of the rear wall to the side panels (Fig. 1 - 2 depending on the model)

- Take 8 **screws (6)** and 8 **nuts (8)** from the kit supplied.
- Secure the **rear wall (A)** to the **side walls (B)** using the **screws (6)** and **nuts (8)** as shown in the diagram.
- Attach the **front wall (C)** to the **side walls (B)** in the same way.

1B Assembly of the Roof to the doghouse Collie doghouse (Fig. 1)

- Take the **screws (7)** from the kit supplied for the Collie doghouse.
- Place the **roof (D)** over the doghouse and line up the holes in the **bracket (E)** with the **holes (F)** on the **front wall (C)**.
- Secure with the **screws (7)**.

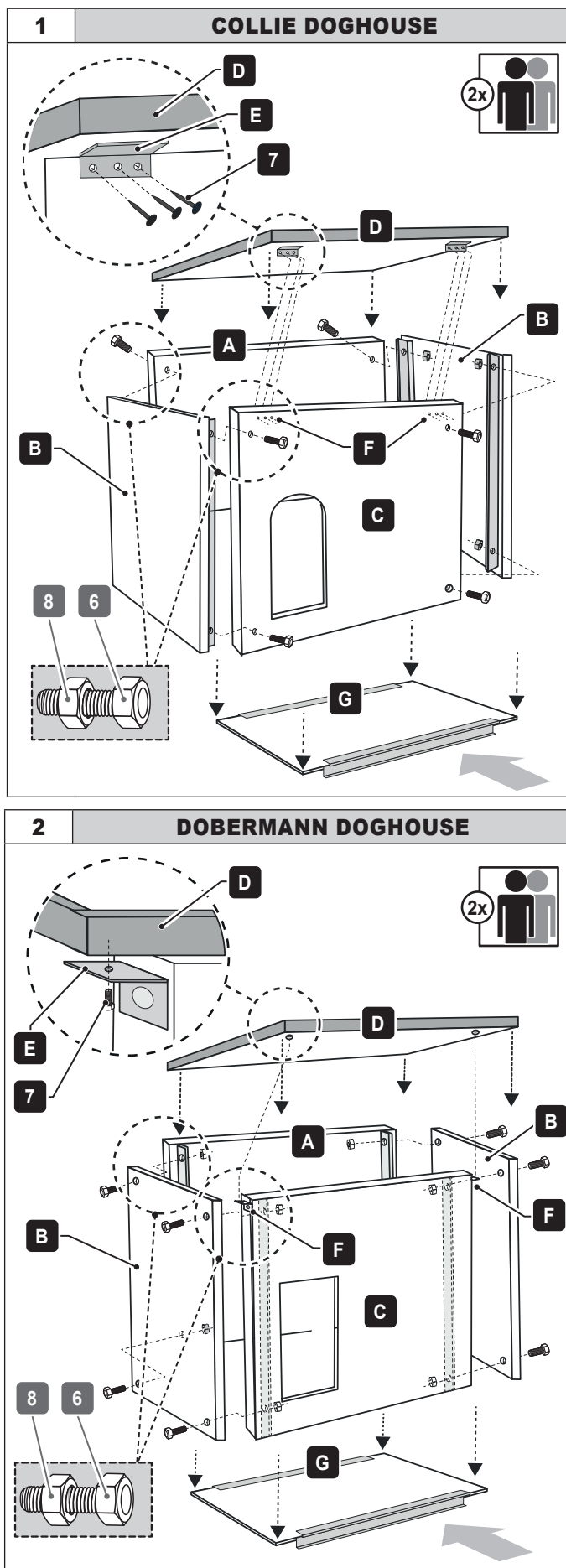
Dobermann doghouse (Fig. 2)

- Take the **screws (7)** from the kit supplied for the Dobermann doghouse.
- Place the **roof (D)** over the doghouse and line up the holes of the **bracket (E)** with the hole provided on the side of the **front wall (C)**.
- Secure with the **screws (7)**.

1C Assembly of the platform to the doghouse

- Lift the dog house off from the roof and insert the **platform (G)**.

Proceed with assembly of the enclosure (open area).



PHASE 2: ENCLOSURE ASSEMBLY (FIG. 3)

2A – Assembly of the side mesh panels

- Attach the mesh **side walls (A1-A2)** to each other using the **screws (2)** and **nuts (8)** at the points shown in the figure.
- Proceed in the same way with the **side panels (A3-A4)**.

2B – Gate assembly

- Secure the **gate (B)** to the mesh **side walls (A2 and A4)** using the **screws (1)** and **nuts (8)** at the points shown in the figure (lower and upper).

2C – Rear panel assembly

- Secure the top of the **rear panel (C)** to the mesh **side walls (A1-A3)** by means of the **screws (1)** and **nuts (8)**.
- On the **side mesh walls (A1-A3)** drill a **hole (F)** at the lower hole of the rear wall.
- Secure the lower part by means of the **screws (3)** and **nuts (8)**.

2D – Roof assembly (if present)

- Place the **roof (D)** over the fence and secure it with the long self-tapping **screws (4)** with expanded gasket and **rhomboid washers (5)**.

2E – Composition of the structure and finishes

- Position the assembled bed, in the housing provided in the enclosure, without attaching it.
- Insert the **plastic caps (E)** into the top of the tubular elements of the **side mesh walls (A)**.

It is advisable to apply silicone to the roof joints.

CLEANING



Clean the structure periodically (or in the presence of obvious dirt). Sanitise, disinfect and clean the inside of the kennel with suitable products that are not harmful to the health of the person and the animal.

SCRAPPING AND DISPOSAL



The materials that compose the structure must be disposed of according to the type and procedures provided for by the legislation in force in the country of installation.

For further detailed information on the disposal of this product, contact the municipal office, the local waste disposal service or the store where it was purchased.

