

ASSEMBLY MANUAL
RABBIT HUTCH FOR 2 BREED



*Dear Customer,
Thank you for purchasing a FERRANTI
product.*

⚠ OBLIGATION

Please consult this assembly manual carefully before proceeding with any operation on the product.

INTRODUCTION

This assembly manual reflects the technique at the time of purchase and the specifications in force at the current date of edition; it contains the information necessary for correct installation, cleaning and disposal of the product at the end of its life.

FERRANTI S.R.L. reserves the right to make modifications, changes or improvements to the manual or to the product at any time and without notice. Use only the original mounting components provided.

ATTENTION

The manufacturer is not liable for damage to property, persons and animals caused by accidents due to failure to comply with the instructions in this assembly manual. ► Only use original mounting parts supplied with the delivery.

INTENDED USE (PERMITTED USE).

The product in question has been designed for the housing and keeping of animals.

IMPROPER USE (NOT PERMITTED).

Any use other than the permitted one is to be considered "improper use"; the Manufacturer therefore declines all responsibility for any damage caused to property, animals and/or persons.

👤 INSTALLATION

2x

The assembly operations must be performed by at least two persons.

► For the assembly of the products, the use of Personal Protective Equipment is always recommended: work gloves to protect the hands from the danger of being cut.

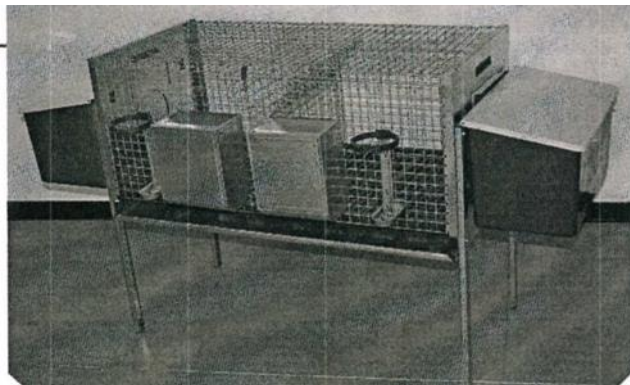
RECOMMENDED TOOLS

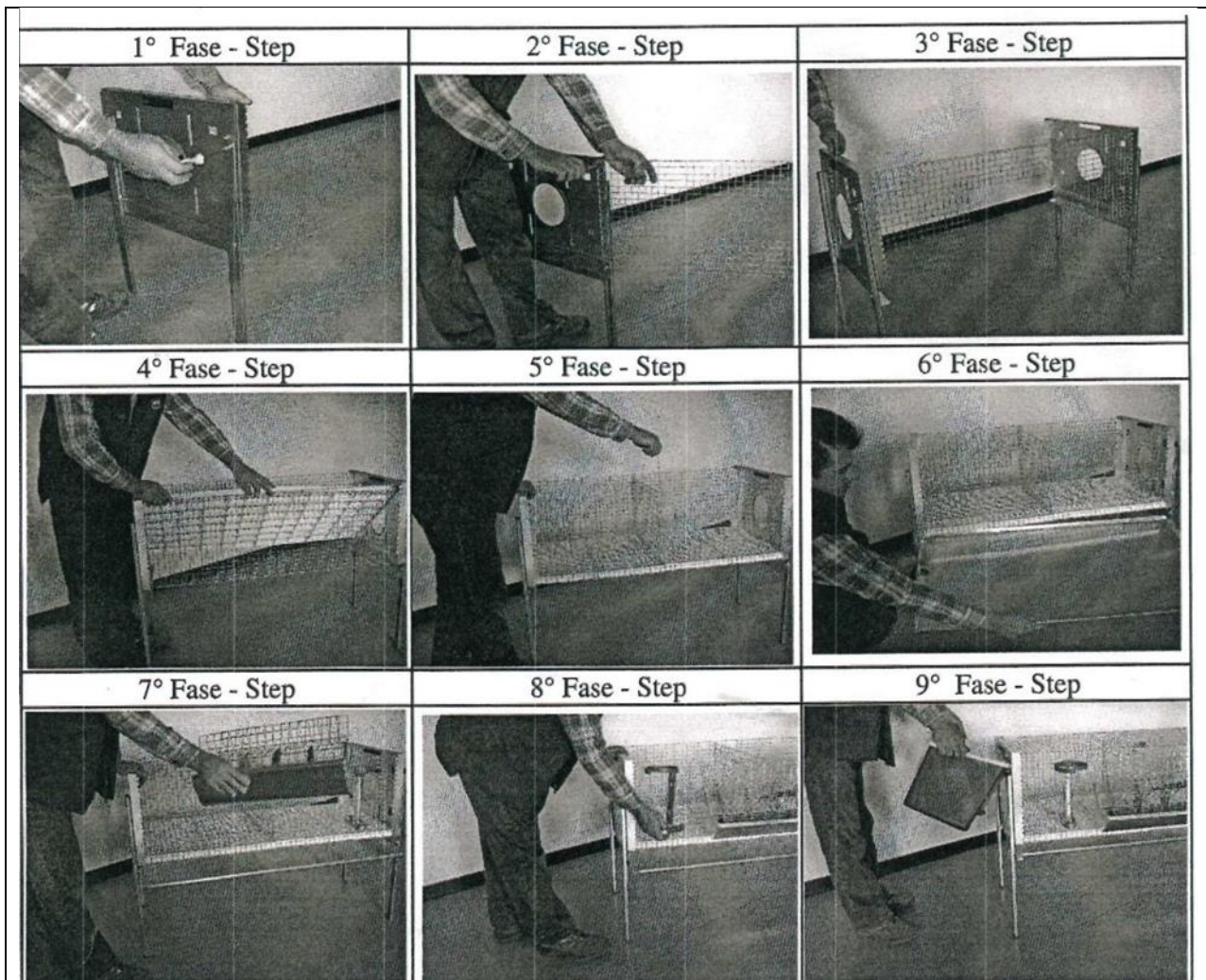
Slotted Screwdriver - Cross Head Screwdriver - Wrench - Cutter.

Note: Tighten the screws completely only at the end and after checking the square of the structure.

INSTALLATION

- Assemble the feet of galvanized sheet metal on the two heads with screws 5x20
- Combine the sheet metal heads with wire grilles by tightening the clamps with a clamp.
- Combine the heads with the front and rear grids
- Assemble the plastic support surface
- Insert the frying pan for collecting manure
- Assemble trough and trough
- Assemble the nests in the appropriate slots.





UNPACKING

- ▶ Place the structure near the final installation site and on a stable and horizontal area of the ground.
- ▶ Remove the packaging materials taking care not to damage the components.

⚠ ATTENTION

DANGER! Keep out of the reach of children and animals. Packaging materials (plastic bags, straps, etc.) can be a source of danger to health (e.g. suffocation).

CLEANING

Clean the structure periodically (or in the presence of obvious dirt). Sanitise, disinfect and clean the inside of the kennel with suitable products that are not harmful to the health of the person and the animal.

♻ RECYCLING

All the packaging materials are recyclable and must be disposed of in accordance with the local legislation.

SCRAPPING AND DISPOSAL

The materials that compose the structure must be disposed of according to the type and procedures provided for by the legislation in force in the country of installation. For further detailed information on the disposal of this product, contact the municipal office, the local waste disposal service or the store where it was purchased.

Ferranti s.r.l. Unipersonale

Via Vicinato n. 43 - Frazione Fratta - 06036 Montefalco (PG) - Italia Tel. (+39) 0742 399096 info@ferrantinet.com - www.ferrantinet.com